



ST. MARGARET SR. SEC. SCHOOL
SAMPLE PAPER
MID-TERM EXAMINATION 2024-25
SCIENCE
CLASS VII

Time: 2 Hr 30 Min

M.M.= 60

GENERAL INSTRUCTIONS:

- All questions are compulsory.
Section A carries 1 mark each.
Section B carries 2 marks each.
Section C carries 3 marks each.
Section D carries 5 marks each.

SECTION -A

Select the correct option (Q1-16) (MCQ)

- Q1. Nitrogen is necessary for the synthesis of
(a) glucose (b) protein (c) starch (d) fats
- Q2. The normal temperature of human body is
(a) 35°C (b) 37°C (c) 40 °C (d) 42°C
- Q3. Which of the following sets of substances contains natural acids?
Washing soda , lime water (c) curd, amla
(b) vinegar, soap (d) washing soda , vinegar
- Q4. In nature, there are two organisms who happily live together. One prepares the food and the other provides shelter. Their association is called
Saprophytic (b) autotrophic (c) symbiotic (d) Parasitic.
- Q5. Land and sea breeze are caused by -----current
Conduction (b) convection (c) radiation (d) Both (a) and (c)
- Q6. Pick the option which gives the names of a tree and an animal, respectively from the following.
(a) Semal, hornbill (b) Sal, khair (c) Chinkara, blue bull (d) Neem, palash
- Q7. A beggar wrapped himself with a few layers of newspaper on a cold winter night. This helped him to keep himself warm because
(a) friction between the layers of newspaper produces heat.
(b) air trapped between the layers of newspaper is a bad conductor of heat.
(c) newspaper is a conductor of heat.
(d) newspaper is at a higher temperature than the temperature of the surrounding.
- Q8. On which axis is dependent variable represented?
(a) x-axis (b) y-axis (c) On any axis (d) Depends on the data
- Q9. Human beings get food from
(a) plants (b) animals (c) neither (a) or (b) (d) both (a) and (b)
- Q10. Which of the following is not prepared from the wood obtained from forest?
(a) Paper (b) Thermocol (c) Matchsticks (d) Plywood
- Q11. The correct symbol to represent the speed of an object is
(a) 5 m/s (b) 5 mp (c) 5 m/s⁻¹ (d) 5 s/m
- Q12. Which one of the following is an autotroph?
(a) Lichens (b) Algae (c) Fungus (d) Cuscuta
- Q13. Yeast are used to make
(a) curd (b) wine and beer (c) bakery items (d) both (b) and (c)
- Q14. When breakdown of glucose occurs with the use of oxygen, it is called
(a) anaerobic respiration (c) regular respiration

(b) aerobic respiration (d) all of these

Q15. Which of the following is the best conductor of heat?

(a) Water vapour (b) Metals (c) Alcohol (d) Wood

Q16. Boojho visited a forest near his town with his classmates and his teacher. As they were entering the forest, their class teacher told them not to make noise in the forest as noise could disturb

(a) birds (b) animals (c) both birds and animals (d) plants.

Q17. Read the following passage and answer the following questions.

A class was divided into three groups A, B and C. Group A was given a solution were added o solution A, group B solution and group C, solution in a test tube. They were told to test it with an indicator, China rose solution which was pink in colour.

Group A observed that when few drops of China rose solution were added to solution A, it turned dark pink.

Group B got a green colour on testing and group C did not get any colour on testing.

Q1. Answer the following questions:

(a) Why did group A get a dark pink colour while group B got a green colour?

(b) What would have been the colour of solution A if with phenolphthalein?

(c) Name the type of solution in test tube C.

(d) What will happen if solution B is tested with red litmus paper?

Q18. For question numbers 1 to 4 two statements are given- one labelled Assertion (A) and the other labelled Reason (R). Select the correct answer to these questions from the codes (a), (b), (c) & (d).

(a) Both (A) and (R) are true and (R) is the correct explanation of the assertion.

(b) Both (A) and (R) are true and (R) is not the correct explanation of the assertion.

(c) (A) is true but (R) is false.

(d) (A) is false but (R) is true.

1. Assertion: Tongue is fleshy muscular organ.: Tongue is used for talking.

Reason: Tongue is fleshy muscular organ.

2. Assertion: Laboratory thermometer has a kink in the glass tube.

Reason: Laboratory thermometer can measure a wide range of temperature from -10°C to 110°C .

3. **Assertion:** Distance- time graph helps to compare the speeds of two objects easily

Reason: The straight line at distance- time graph indicates the speed of an object

4. Assertion: Forests are a precious natural resources.

Reason: Forests are a self sustaining ecosystem

Q19. What is the role of bile juice secreted by the liver?

Q20. Give one example of food chain

Q21. Write the word equation of Photosynthesis.

Q22. Look at Figure 4.9.

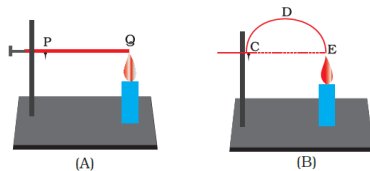


Fig. 4.9

The length of wire PQ in case of A is equal to the diameter of the semicircle formed by the wire CDE, in case B. One pin is attached to each wire with the help of wax as shown in Figure 4.9. Which pin will fall first? Explain.

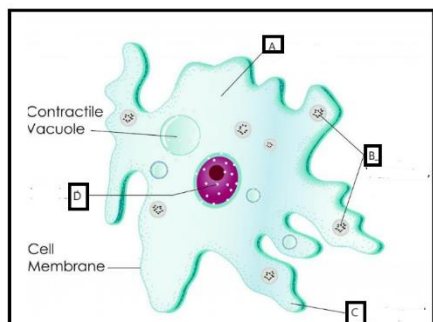
- Q23. Paheli is suffering from indigestion due to acidity. Is it advisable to give her orange juice in this situation, and why?
- Q24. Define radiation
- Q25. State any two characteristics of bases.
- Q26. Give an example of insectivorous plant.
- Q27. State the motion exhibited by a child on merry go round
- Q28. Identify and name the organ. Name the acid secreted by this organ



- Q29. Why does the forest floor seem to be dark- coloured?
- Q30. What is the chemical composition of milk of magnesia?

SECTION - B

- Q31. Why does the food taste sweeter if chewed for along time ?
- Q32. Deforestation may lead to floods. Why?
- Q33. A. What is the important function of 'rumen' in cud chewing animals?
B. State any two important functions of pseudopodia in amoeba.
- Q34.A. A car is moving with speed 72km/hr. Convert this speed into metre/sec.
B. Differentiate between uniform and non-uniform motion.
- Q35. Labels the parts A, B , and D



SECTION - C

- Q36.A. Name the acid present in spinach
B. While playing in a park, a child was stung by a wasp. Some elders suggested applying the paste of baking soda and other lemon juice as the remedy. Which remedy do you think is appropriate and why? **1+2**
- Q37. A. State how do we measure time interval of a month.
B. Salma takes 15 minutes from her house to reach her school on a bicycle. If the bicycle has a speed of 2 m/min, calculate the distance between her house and the school.
- Q38. A. While constructing a house in a coastal area, in which direction should the windows preferably face and why?
B. Differentiate between land breeze and sea breeze. **1+2**

SECTION - D

- Q39. A. Define cellular respiration.
B. Why does an athlete breathe faster and deeper after finishing a race?
C. What happens during inhalation and exhalation in humans? **1+2+2**